

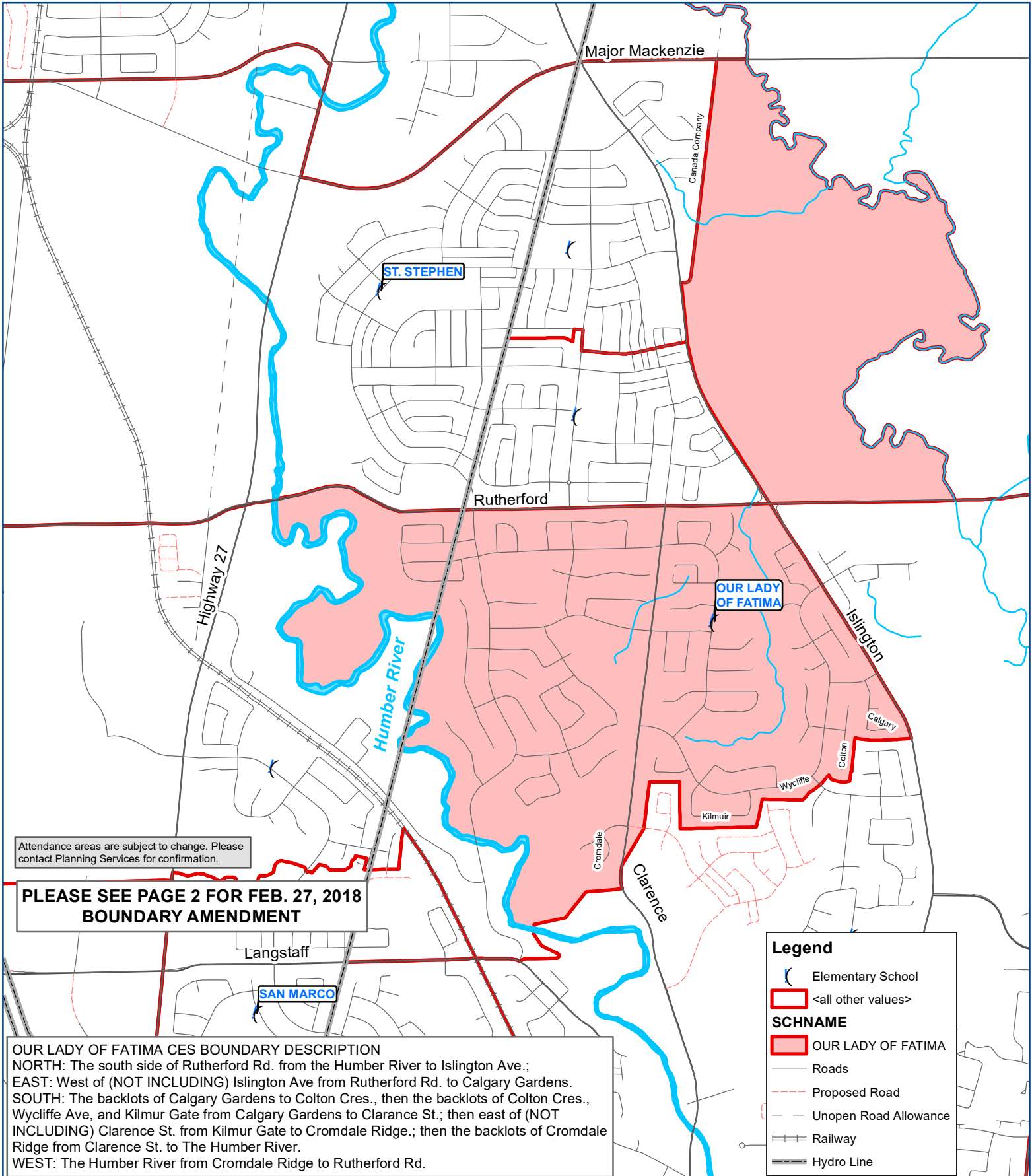


191 Crofters Road
Phone: 905-856-1666

School Attendance Area - City of Vaughan

Our Lady Of Fatima CES

Board Approved: February 22, 2022
Date Effective: Immediately



Attendance areas are subject to change. Please contact Planning Services for confirmation.

PLEASE SEE PAGE 2 FOR FEB. 27, 2018 BOUNDARY AMENDMENT

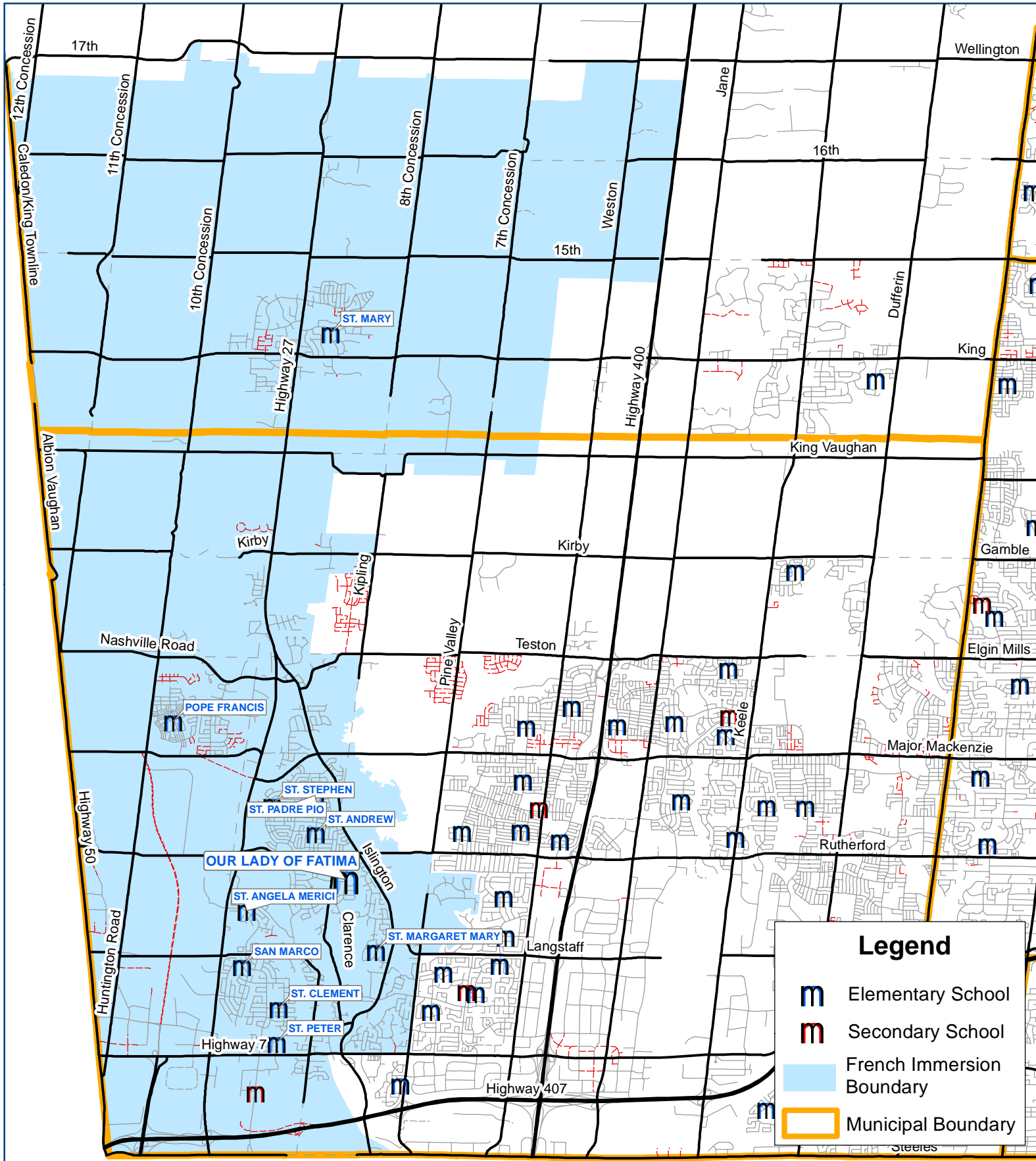
OUR LADY OF FATIMA CES BOUNDARY DESCRIPTION
 NORTH: The south side of Rutherford Rd. from the Humber River to Islington Ave.;
 EAST: West of (NOT INCLUDING) Islington Ave from Rutherford Rd. to Calgary Gardens.
 SOUTH: The backlots of Calgary Gardens to Colton Cres., then the backlots of Colton Cres., Wycliffe Ave, and Kilmur Gate from Calgary Gardens to Clarence St.; then east of (NOT INCLUDING) Clarence St. from Kilmur Gate to Cromdale Ridge.; then the backlots of Cromdale Ridge from Clarence St. to The Humber River.
 WEST: The Humber River from Cromdale Ridge to Rutherford Rd.



French Immersion Boundary Map

Host School: OUR LADY OF FATIMA

School Year
2017-18



Legend

- Elementary School
- Secondary School
- French Immersion Boundary
- Municipal Boundary

