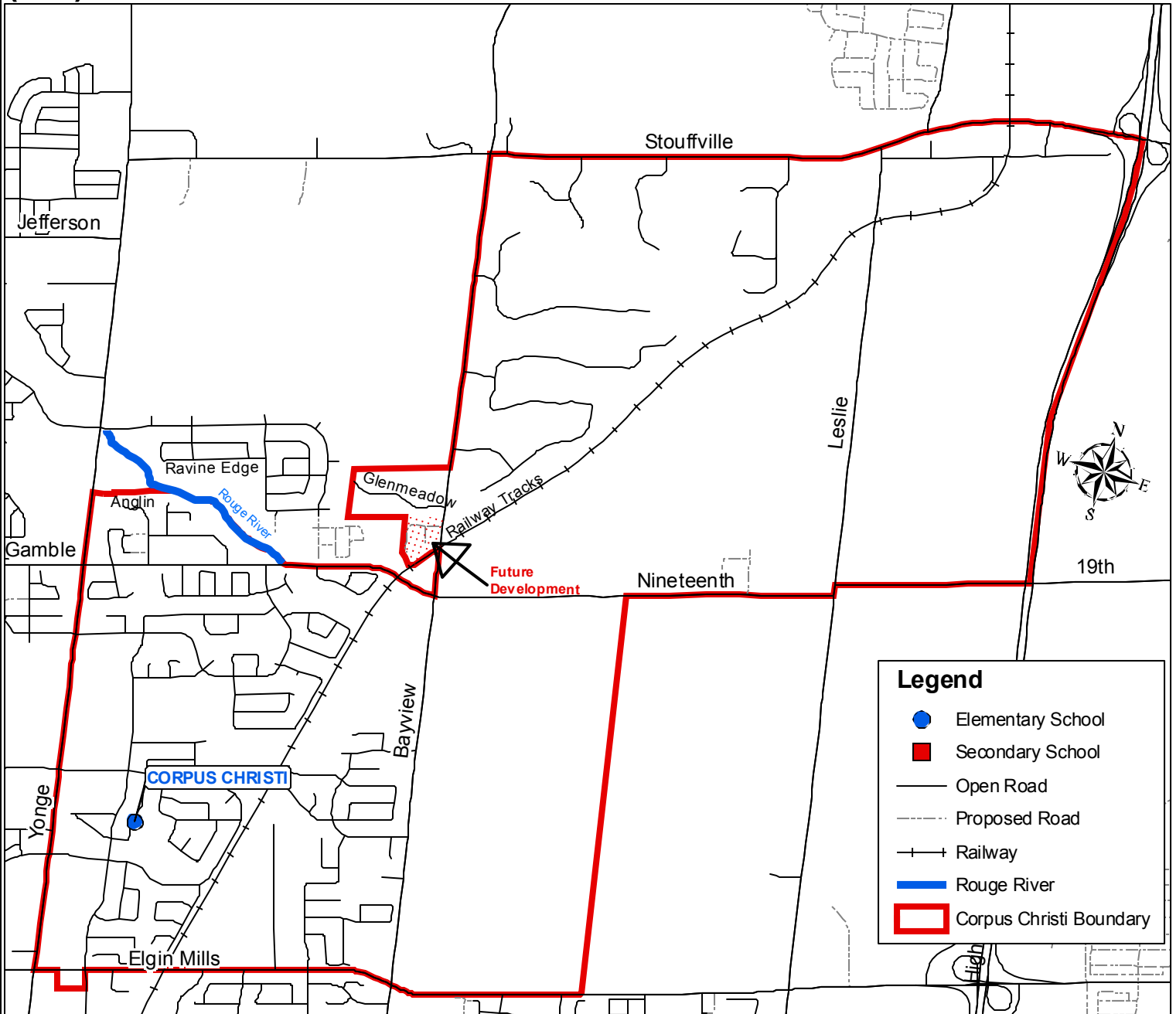


**Corpus Christi**  
**35 Squire Drive**  
**(905) 770-8713**

Board Approved: September 18, 2007  
 Date Effective: September 18, 2007



**CORPUS CHRISTI BOUNDARY**

**NORTH:** The backlots of Anglin Dr. from Yonge St. to the Rouge River; then south of the Rouge River from the backlots to Nineteenth Ave.; then the south side of Nineteenth Ave. from the Rouge River to Bayview Ave.; then both sides of Bayview Ave. from Nineteenth Ave. to Stouffville Sideroad (including Glenmeadow Lane and the future development immediately south of Glenmeadow Lane); then the south side of Stouffville Sideroad from Bayview Ave. to Highway 404.

**EAST:** West of Highway 404 from Stouffville Sideroad to Nineteenth Ave.; then the north side of Nineteenth Ave. from Highway 404 to the midway point between Leslie St. and Bayview Ave.; then the midway point between Leslie St. and Bayview Ave from Nineteenth Ave. to Elgin Mills Rd.

**SOUTH:** Both sides of Elgin Mills Rd. from Highway 404 to Yonge St.

**WEST:** East side of Yonge St. from Elgin Mills Rd. to the backlots of Anglin Dr

**OUR LADY HELP OF CHRISTIANS**

Attendance areas are subject to change. Please contact Planning Services for confirmation.

PLANNING SERVICES  
 September, 2007  
 k:\projects\board approved boundaries  
 CorpusChristi.pdf

Major N