



# OUR LADY OF THE ROSARY

206 Glenshields Avenue  
(905) 669-6690

Board Approved: September 26, 2006  
Date Effective: September 26, 2006

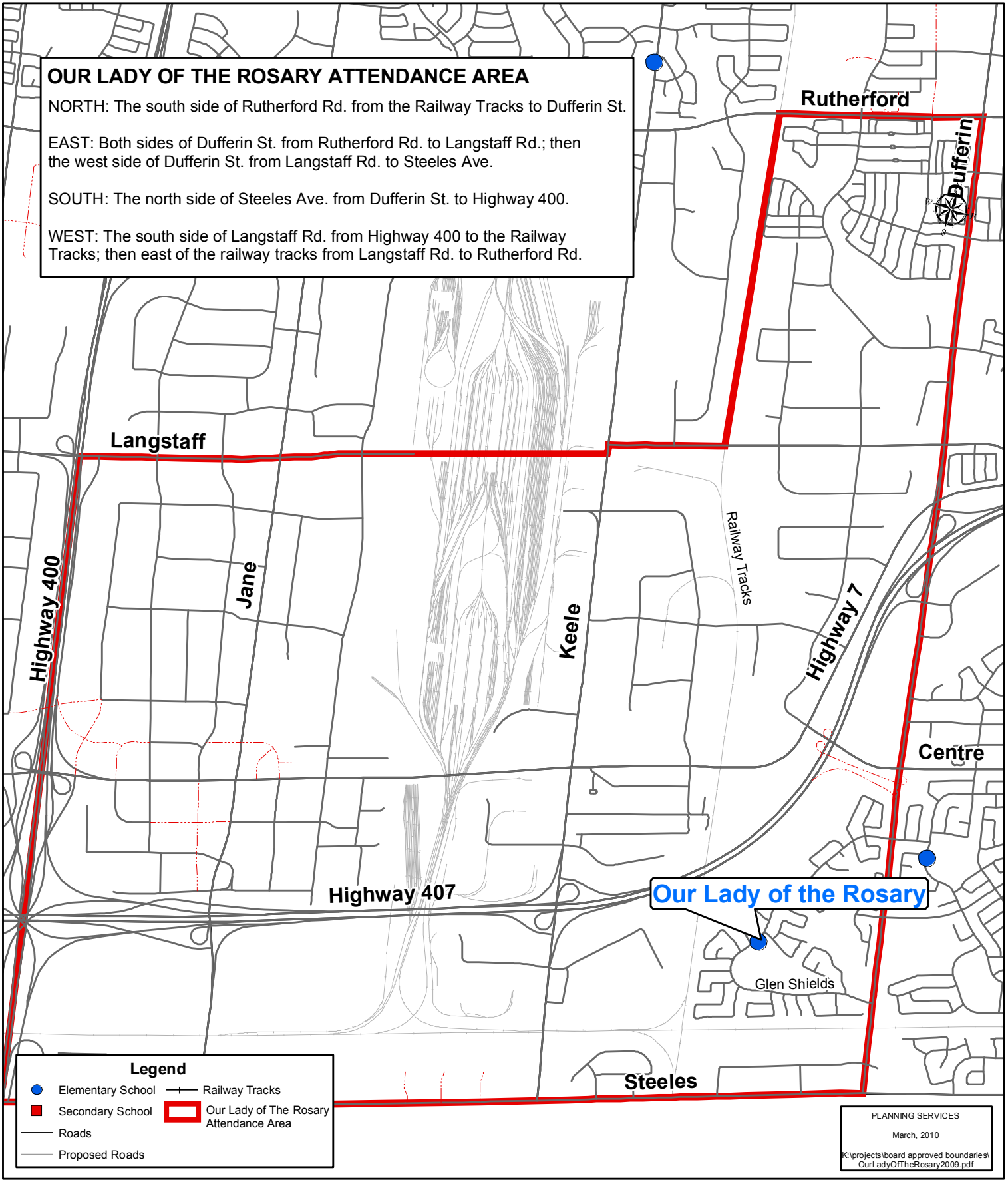
## OUR LADY OF THE ROSARY ATTENDANCE AREA

**NORTH:** The south side of Rutherford Rd. from the Railway Tracks to Dufferin St.

**EAST:** Both sides of Dufferin St. from Rutherford Rd. to Langstaff Rd.; then the west side of Dufferin St. from Langstaff Rd. to Steeles Ave.

**SOUTH:** The north side of Steeles Ave. from Dufferin St. to Highway 400.

**WEST:** The south side of Langstaff Rd. from Highway 400 to the Railway Tracks; then east of the railway tracks from Langstaff Rd. to Rutherford Rd.



**Our Lady of the Rosary**

### Legend

- Elementary School
- Secondary School
- Roads
- Proposed Roads
- +— Railway Tracks
- Our Lady of The Rosary Attendance Area